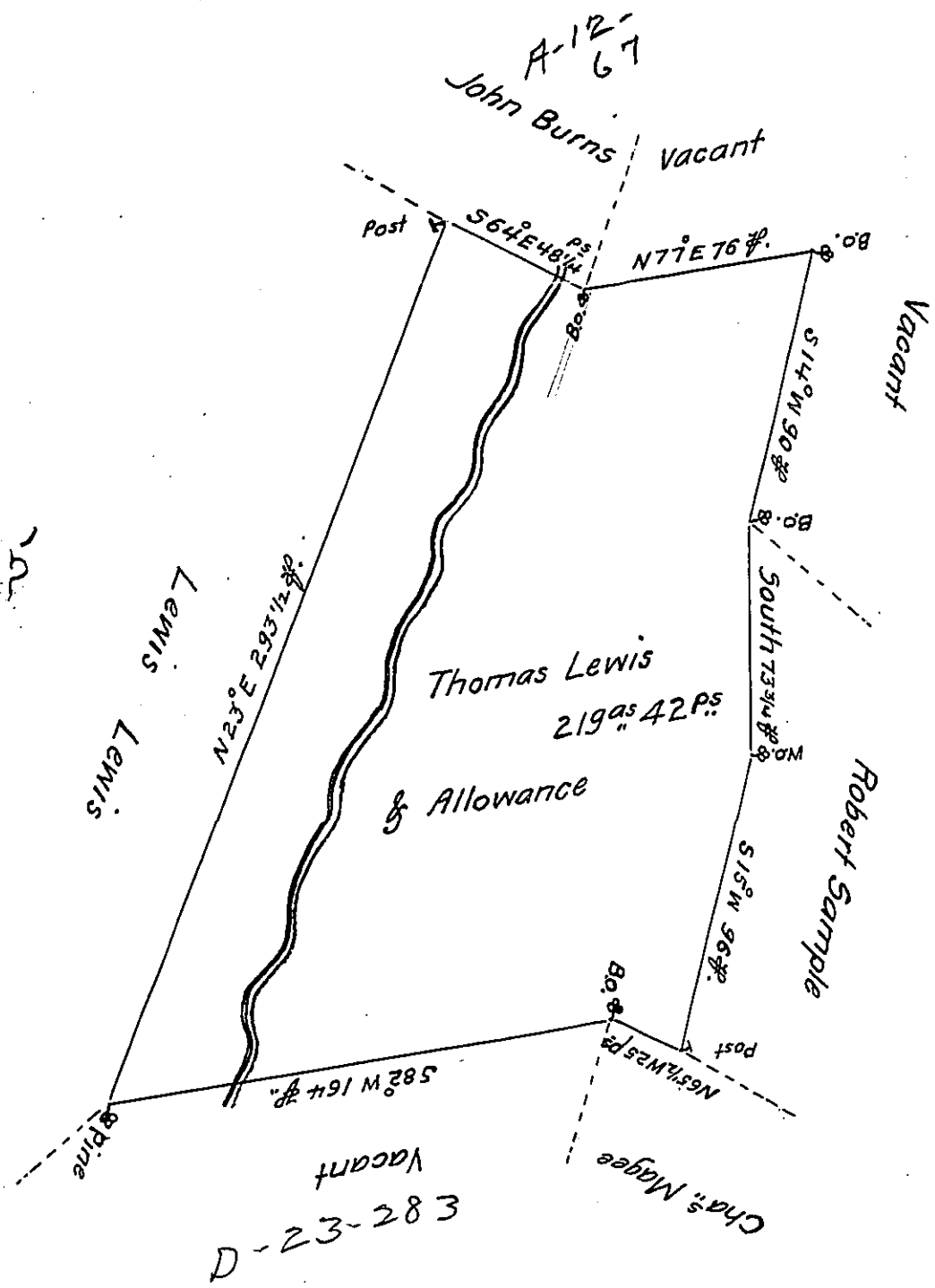


Pg 195



A Draught of a Tract of Land Situate in Hamilton Township in the County of Cumberland Containing Two Hundred & nineteen Acres and forty two Perches and an Allowance of Six  $\frac{1}{2}$  Cent. for Roads &c. Survey'd the 4<sup>th</sup> June 1767 for Thomas Lewis in pursuance of an Order of Survey Dated March 4<sup>th</sup> 1767. N<sup>o</sup> 2985. ~

To John Lukens Esq. }  
Surveyor General. }

IN TESTIMONY that the above is a copy of the original remaining on file in the Department of Internal Affairs of Pennsylvania, made conformably to an Act of Assembly approved the 16th day of February, 1833, I have hereunto set my Hand and caused the Seal of said Department to be affixed at Harrisburg, this twenty-third day of June 1908

*Nevoy Howard*  
Secretary of Internal Affairs.